



OK'S Cascade Company
Mobile Solutions - (800) 458-8061 - www.oks.com

S357 MOBILE SHOWER DESCRIPTION:

S357 is a job specific support shower, housed in a 24' trailer. Unit has 6 individual shower compartments for both male and female use. A single handicapped compartment with access ramp is also available. Florescent and natural lighting is provided. Exhaust hood fans and natural ventilations are used to aerate the shower. S357 must be accompanied by larger 48' Mobile Shower for water and power supplies.

CAPACITY:

S357 is fully capable of supporting over 150 people per day.

POWER REQUIREMENTS:

Mobile Shower requires an electrical source. A single 110v connection is needed.

POTABLE WATER REQUIREMENTS:

Mobile Shower requires presence of larger 48' mobile shower for pressurized hot and cold water source.

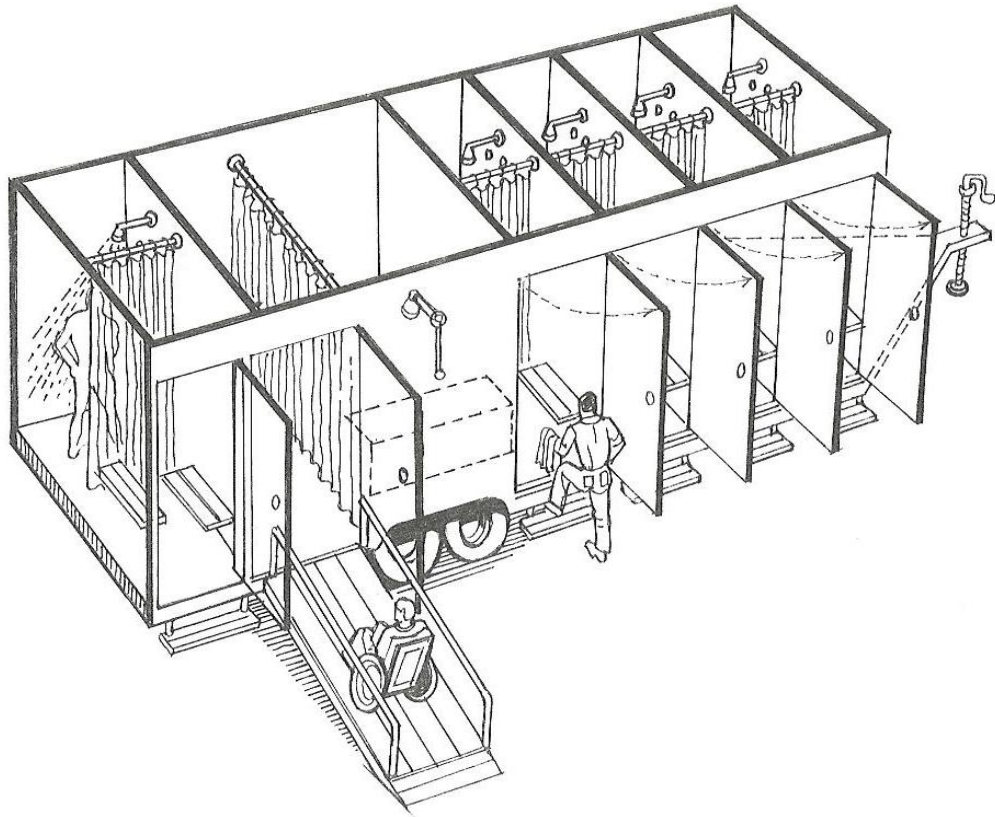
GRAY WATER REQUIREMENTS:

Mobile Shower also requires a grey water drop site. Connection is made with a 2" male cam lock fitting. If no city sewer drop exists, the unit is supplied with self contained 1350 Gal. holding tanks. A grey water removal service is required to drain tanks over the course of the operation.

S357 MOBILE SHOWER PICTURE:



1429 Avenue D, #166
Snohomish, WA 98290



1429 Avenue D, #166
Snohomish, WA 98290